



EYSAC Workforce

**Innovation Network Meeting
Thursday 17th October 2019**



Early Childhood Australia
Tasmania Branch

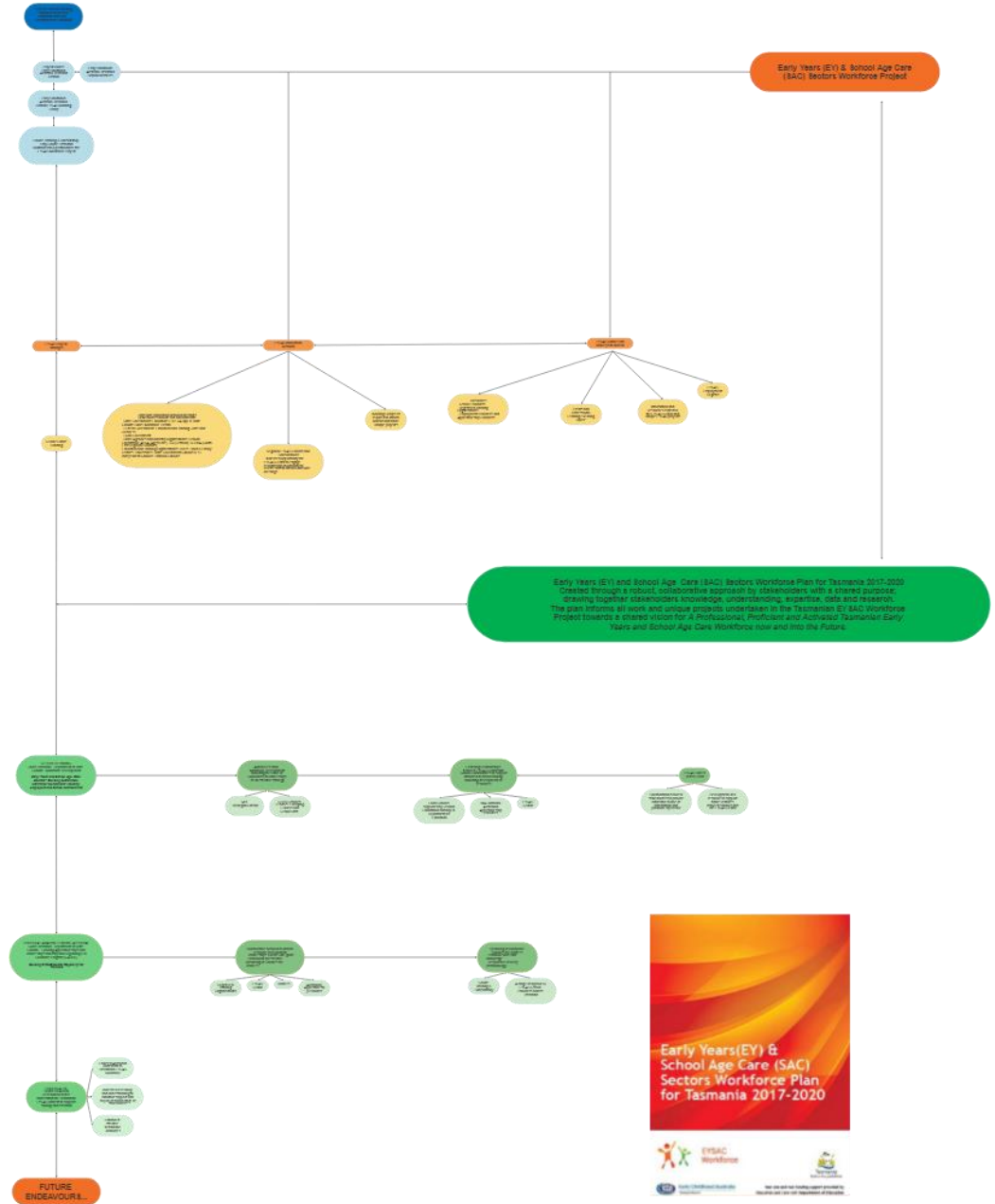
SUPPORTED BY



**Tasmanian
Government**



**EYSAC
Workforce**



EYSAC Online Hub

www.eysac.com.au



Employment Register



21 Employers



53 Job Seekers



17 Jobs advertised



Events



Directories



EYSAC
Workforce

[HOME](#)

[EVENTS](#)

[JOBS](#)

[MY ACCOUNT](#)

[LOGOUT](#)

[HOME](#) > [EVENTS](#)





Employer Directory

Search

Reset



Adventure Patch



Cambridge Road Play and Learn Centre



Discovery Early Learning



Discovery Early Learning Centres



Discovery Early Learning Centres



GlobalNet ICT Pty Ltd



GlobalNet ICT Pty Ltd



Business Name

GlobalNet ICT Pty Ltd

Website URL

<https://www.globalnetacademy.edu.au>

E-mail Address

info@globalnetict.com

Latest News

Our nationally recognised horticulture courses provide a unique opportunity for those entering the horticulture profession for the first time, and for those who wish to formalise their horticultural skills. If you have a strong interest in horticulture, then these courses are for you!

Phone Number

03 6234 5794

Mobile Number

0438687125

Facebook

[Facebook](#)

LinkedIn

[LinkedIn](#)

Twitter

[Twitter](#)



Skills Tas Workforce Project

Building Sustainable Foundations: Sector and School Communities



Phase 1

- Workforce Action Research
- Workforce Strategies including Schoolbased/Traineeships

Phase 2

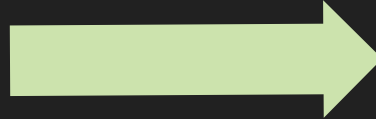
- Building Relationships with School Communities
- Creating Resources to support informed decision making

Phase 3

- EYSAC Career Taster Event
- Hosting Resources across all 3 phases on the Online Hub

**Collaborative Network to
inform resource
development**

- Traineeships 'On the Job'
guide
- Framework for effective
upskilling of Coaches for
Trainees



**Upskilling of Workplace
Coaches for Trainees**

- Practical skills and
knowledge
- Responsive delivery
methodology

**GATIRS
Building EYSAC
Sector Capability
for Trainees**

Research

- Collect and analyse both the quantitative and qualitative data to synthesise an authentic landscape of the Tasmanian EYSAC Workforce.
- Create an increasingly reliable and strong evidence base contextual to the Tasmanian EYSAC Workforce.
- To enhance the decision-making process and adopt a targeted, coordinated and strategic approach.
- Increased relevancy and understanding can motivate the active buy in of a broad range of stakeholders.
- Enhanced, effective, sustainable outcomes.

... a further \$3.8 million for scholarships and incentives to support more people to pursue careers in early childhood education

\$7.2 million investment in workforce initiatives to attract aspiring early childhood teachers and retain them

This will build on the Labor Government's existing \$8 million Early Childhood Scholarship Program, which opened in October 2018 and has already offered more than 400 scholarships to eligible students

700 scholarships are on offer.

Tasmanian Community Fund

Round – 40 - Large

INCREASING WORKFORCE ENGAGEMENT

25th January 2020



Project funding is available for:

- a maximum of five years;
- projects that are tailored for the Tasmanian community;
- programs, including pilot programs;
- evaluation of the methodology being delivered.

Funding is not available for:

- research or feasibility studies;
- infrastructure beyond 10% of the amount being requested from the Fund;
- projects that can be more suitably funded by another organisation;
- duplication of existing programs;
- projects that do not include collaboration and partnerships or a clear articulation as to why this is not possible.

Good news stories ...

**The impossible will take a little
while**

Paul Loeb

Discrimination against men in the area of parenting is commonplace; it's even – as I shall explain – sanctioned by Commonwealth law. And this discrimination underpins ancient structures that disadvantage not only men, but women and children too.

Crabb goes on to explore and provide both quantitative and qualitative data to demonstrate how intelligently crafted policies in government and workplaces has directly affected culture.

QUARTERLY ESSAY

ISSUE 75 2019
A\$22.99 (AUS\$20)
NEXT ISSUE:
PETER HARTCHER
ON AUSTRALIA
AND CHINA



MEN AT WORK AUSTRALIA'S PARENTHOOD TRAP ANNABEL CRABB

Correspondence

'THE PROSPERITY GOSPEL' James Newton, David Marr,
Judith Brett, Barry Jones, Elizabeth Flux, Kristina Keneally,
Patrick Mullins, Matthew Ricketson, Russell Marks,
Erik Jensen

Project team



Kellie Watson
Project Manager

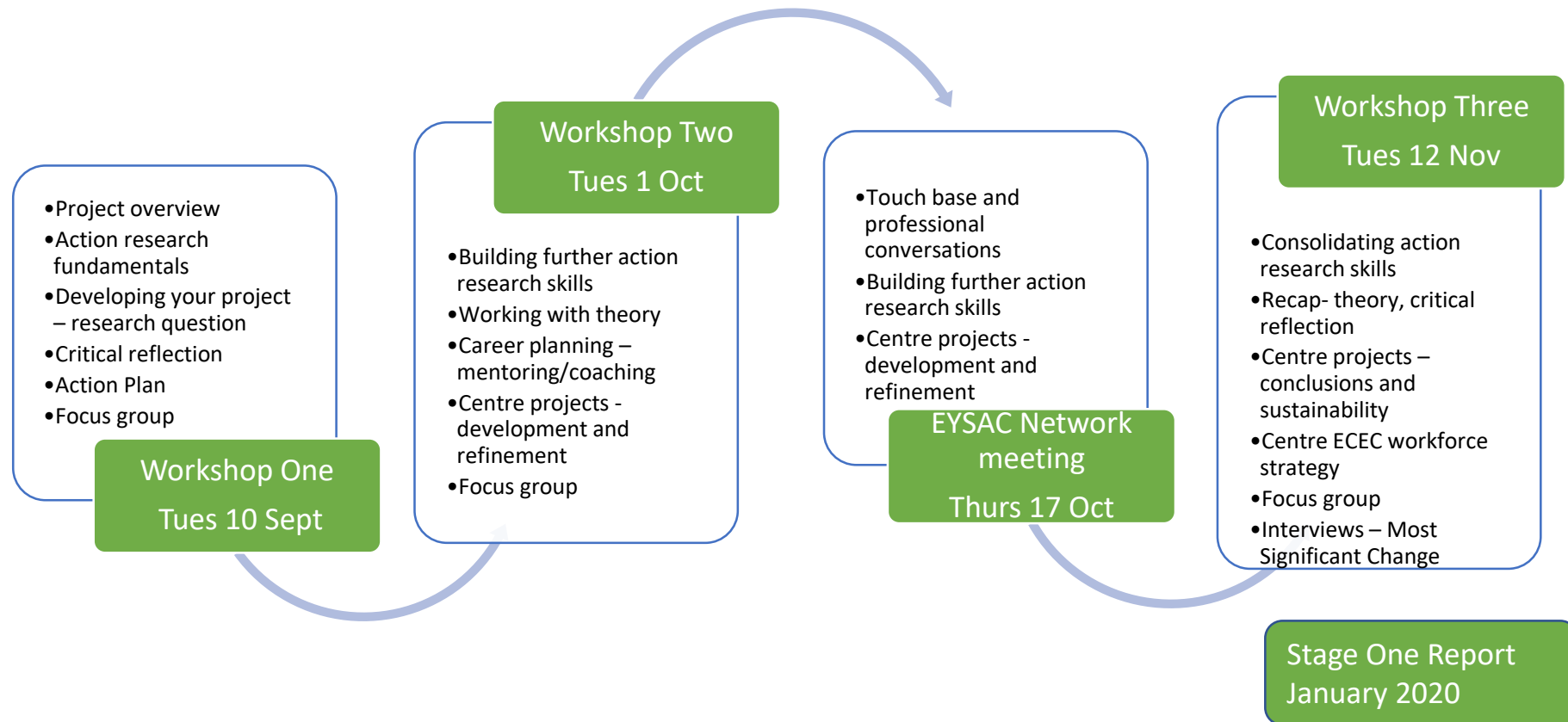


Christine Woolley
Project Officer



Megan Gibson
Project Consultant
Stage One Lead (Action Research)

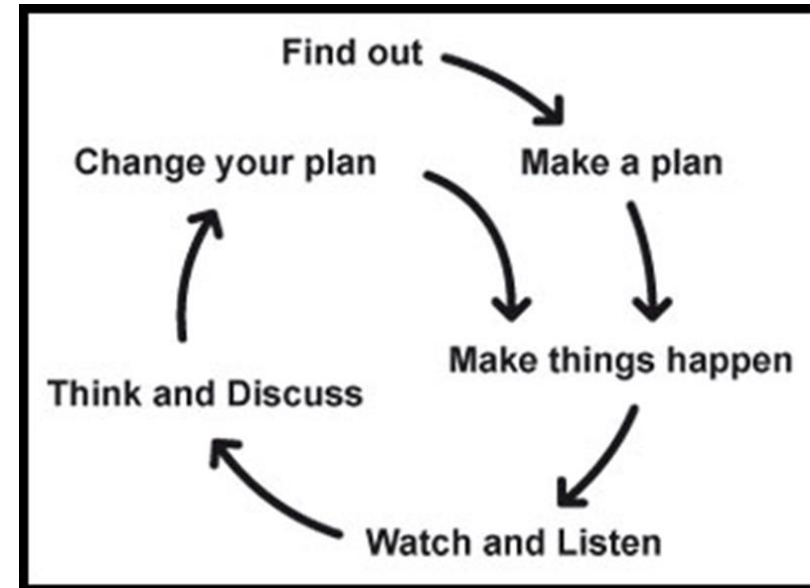
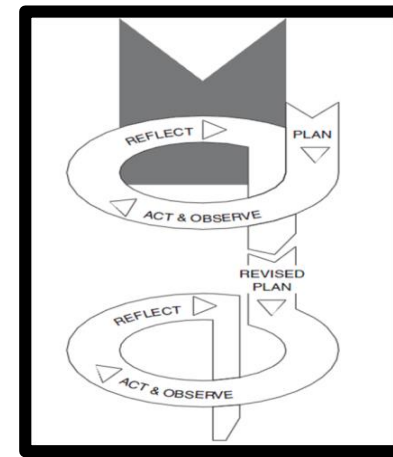
Phase One - Building a sustainable workforce program shape and timeline



Critical reflection Working with theories
Coaching and mentoring
Materials to complement project's content

What is Action Research?

- A fluid, unfolding process of research *think-do-think*
- Involves recursive cycles of questioning, gathering data, critical reflection and deciding on a course of action



Phase One - Building sustainable workforce foundations:

GUIDING RESEARCH QUESTION

How can early childhood centres build strong **workforce development strategies** through **action research**?

Focus groups

- What is your intended action research early years centre-based early childhood workforce project focus and associated question that you are investigating?
- Over the course of the program, so far, what have you focused on (in your action plan)?
- What challenge/s, if any, have you experienced?
- Moving forward, what will you focus on (in your action plan)?
(consider roles and responsibilities, resources,...)
- How have you reconsidered your research question, and/or developed further sub-questions?

Phase One - Building sustainable foundations projects



2020 Education and Care Scholarship Program

Applications open 3rd October and close on 24th
November 2019

These scholarships are to assist educators with an ACECQA approved Diploma qualification and relevant workplace experience, to gain an ACECQA approved early childhood teaching qualification – Bachelor of Education (Early Childhood Teaching).

Alignment Check



Future steps



Continued implementation of Building Sustainable Foundations



Awaiting outcome of GATIRS



Continued perseverance with Research opportunities



Tasmanian Community Fund opens January 2020 - Preparation



Lunch



Options

Tas Community Fund Proposal

GATIRS 'On the Job' Tool

Building Sustainable Foundations
Pipeline Resources;

- a) Career Pathway Map
- b) Post Card & Brochure
- c) Essential Guide

Comments and Close



THANK
YOU



